

TraceFinder 2.0 SP1 Installation Instructions

Before installing the TraceFinder application, ensure that Microsoft™ Excel™ 2007 SP2 or Excel 2010 is installed.

Contents

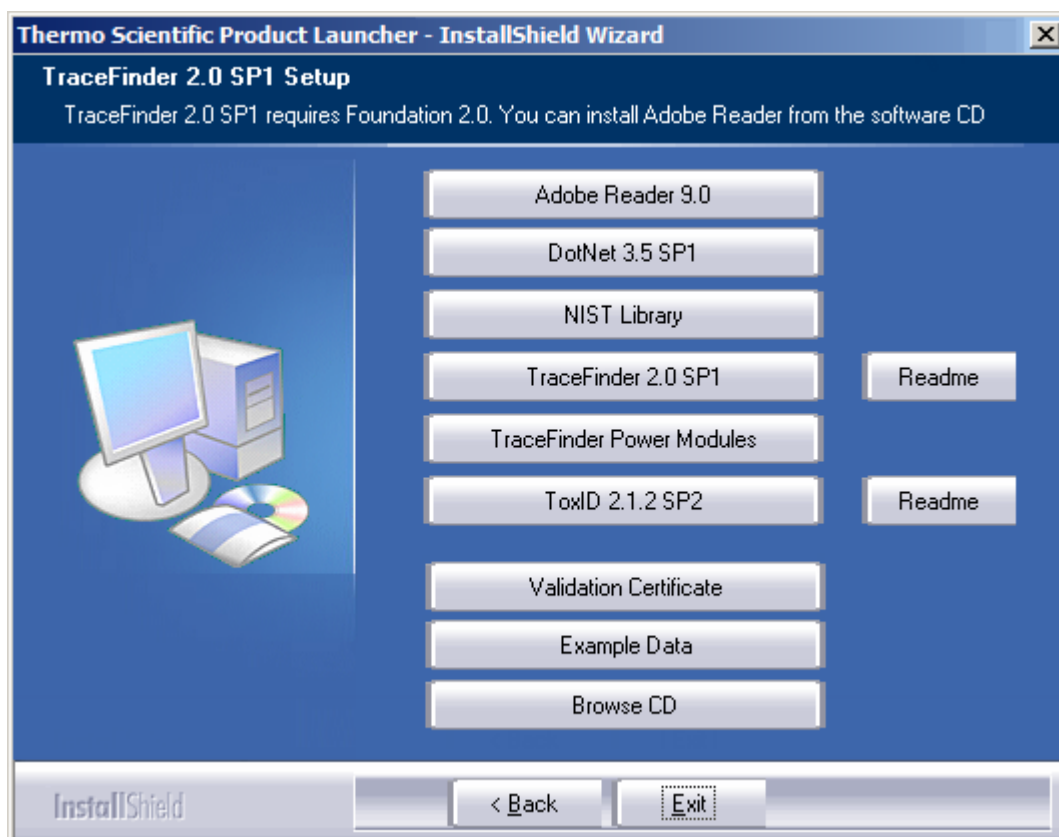
- [New Installation](#)
- [Previous Installation](#)
- [License Activation](#)
- [Trademarks](#)

New Installation

❖ To install the TraceFinder application for the first time

1. Install all your instruments and instrument drivers.
2. Insert the TraceFinder CD, open the TraceFinder launcher, and click **Next**.

The InstallShield Wizard opens.



3. Click the **TraceFinder 2.0 SP1** button, and follow the instructions in the InstallShield Wizard.

The installer verifies that you have the appropriate versions of the Thermo Foundation™ and Thermo Xcalibur™ applications and updates them if necessary.

IMPORTANT If prompted to install Thermo Foundation, click **Yes**, and then when prompted to restart your computer, click **OK**.

The wizard continues the installation.

Previous Installation

4. When prompted, choose to install either the **GC** or **LC** version of the software.
5. When the installation completes, do not launch the TraceFinder application.
6. Open the TraceFinder launcher again, and click **Next**.
7. Click the **ToxID 2.1.2 SP2** button, and follow the instructions to install ToxID.
8. Click the **NIST Library** button, and follow the instructions to install the NIST library (required for ToxID).
When the wizard prompts you to select a destination folder, select **C:\Program Files\NISTMS**.
9. (Optional) Click the **Example Data** button, and follow the instructions to install an example project that contains example batch data.
10. Install the appropriate device drivers, and configure the instruments in the Thermo Foundation Instrument Configuration dialog box.
11. You can now start your TraceFinder application.

❖ To replace your current TraceFinder application

1. From Thermo Foundation Instrument Configuration dialog box, remove all instruments.
2. From the Windows™ Control Panel, remove Thermo TraceFinder and then remove all Thermo instrument drivers.
3. Open the TraceFinder launcher and click **Next**.
The InstallShield Wizard opens.
4. Click the **TraceFinder 2.0 SP1** button, and follow the instructions in the InstallShield Wizard.
5. When asked if you want to completely remove any previously installed TraceFinder applications, click **Yes**.
6. Open the TraceFinder launcher again and click **Next**.
7. Click the **TraceFinder 2.0 SP1** button and follow the instructions in the InstallShield Wizard.

IMPORTANT If prompted to uninstall Thermo Foundation, do the following:

1. Click **Yes**, and then when prompted to restart your computer, click **OK**.
The wizard continues the installation.
2. When prompted to install Thermo Foundation, click **Yes**, and then when prompted to restart your computer, click **OK**.
The wizard continues the installation.

3. When prompted, choose to install either the **GC** or **LC** version of the software.
4. When the installation completes, do not launch the TraceFinder application.
5. Open the TraceFinder launcher again and click **Next**.
6. Click the **ToxID 2.1.2 SP2** button, and follow the instructions to install ToxID.
7. If you have not previously installed the NIST library, click the **NIST Library** button and follow the instructions to install the NIST library (required for ToxID).
8. (Optional) Click the **Example Data** button, and follow the instructions to install an example project that contains example batch data.
9. Install the appropriate device drivers, and configure the instruments in the Thermo Foundation Instrument Configuration dialog box.
10. You can now start your TraceFinder application.

License Activation

When you first start the TraceFinder application, a dialog box displays the number of days remaining on your 60-day demo license. If your demo license has expired, the License Activation window opens.

License Activation

You don't have a valid license. To obtain a activation key, send the license code below to Thermo Fisher Scientific.
Email: ThermoMSLicensing@Thermo.com
You will get an activation key.

User Info:

Name: Street Name:
Company: City:
E-Mail: Zip Code:
Telephone: Country:

Feature Info:

Barcode:

License Text:

Copy Paste Set

Thermo SCIENTIFIC

Note You can open the License Activation window at any time during your trial period by choosing **Help > License Activation** from the TraceFinder menu. If you already have a permanent license, a message tells you that your product is fully licensed.

Two types of licenses are available:

- 60-Day Evaluation Version (free of charge)
- Full Version Single License

The evaluation version is full-featured and automatically expires 60 days after activation. Any attempt to set back the system date automatically terminates this version. You can purchase and then activate the full version of the TraceFinder application at any time, during or after the free evaluation, without reinstalling the software.

Each activation key is valid only for a single license. Any additional installation generates a different license and requires a different activation key.

For questions regarding activation, contact Thermo Fisher Scientific Technical Support in San Jose, CA:

- E-mail: ThermoMSLicensing@thermofisher.com
- Fax: (408) 965-6120

❖ **To request an activation key**

1. In the License Activation window, enter your information in the User Info area.
As you type, the License Text box creates an XML text string with your information.

User Info:

Name:	<input type="text" value="User"/>	Street Name:	<input type="text" value="123 Main Street"/>
Company:	<input type="text" value="Thermo Fisher Scientific"/>	City:	<input type="text" value="San Jose"/>
E-Mail:	<input type="text" value="user@thermofisher.com"/>	Zip Code:	<input type="text" value="95123"/>
Telephone:	<input type="text"/>	Country:	<input type="text" value=""/>

Feature Info:

Barcode:

License Text:

```
<LicenseRequest version="1.1"><UserInfos><UserInfo name="Name">User</UserInfo>
<UserInfo name="Company">Thermo Fisher Scientific</UserInfo><UserInfo name="Email">
user@thermofisher.com</UserInfo><UserInfo name="Telephone"></UserInfo><UserInfo
name="Street">123 Main Street</UserInfo><UserInfo name="City">San Jose</UserInfo>
<UserInfo name="Zip Code">95123</UserInfo><UserInfo name="Country"></UserInfo>
</UserInfos><Features><Feature name="TraceFinder_Base"></Feature><Feature
```

2. In the barcode box, type the barcode printed on the TraceFinder CD.
The form of the barcode number is either *xxxx-xxxx-xxxx* or *xxxx-xxxx-xxxx-xxxx*.
3. When you finish entering all your information, click **Copy**.
The application copies this XML text to the Clipboard.
If you have not completed all the information, a pop up identifies the missing information.
4. Paste this XML text in the body of an e-mail and send the e-mail to ThermoMSLicensing@thermofisher.com.

To...

Cc...

Send

Subject: request for TraceFinder license

```
<LicenseRequest version="1.1"><UserInfos><UserInfo name="Name">User</UserInfo><User
name="Company">Thermo Fisher Scientific</UserInfo><UserInfo
name="Email">user@thermofisher.com</UserInfo><UserInfo name="Telephone">408-123-
1234</UserInfo><UserInfo name="Street">123 Main Street</UserInfo><UserInfo name="City">
Jose</UserInfo><UserInfo name="Zip Code">95123</UserInfo><UserInfo name="Country">U
STATES</UserInfo></UserInfos><Features><Feature name="TraceFinder_Base">1111-2222-
3333</Feature><Feature name="TraceFinder_General">1111-2222-
```

❖ **To use your activation key**

1. When you receive your activation key, copy it from the e-mail.
2. Choose **Help > License Activation** from the TraceFinder menu.
The License Activation window opens.
3. Click **Paste**.
The application pastes the contents of the Clipboard to the License Text box.
4. Click **Set**.

The application is activated according to the type of authorization your license gives you.

Note You must run the TraceFinder application with ITAdmin or LabDirector permissions when entering the activation key.

Trademarks

Xcalibur is a registered trademark of Thermo Fisher Scientific Inc. in the United States.

Microsoft, Windows, and Excel are registered trademarks of Microsoft Corporation in the United States and other countries.

All other trademarks are the property of Thermo Fisher Scientific and its subsidiaries.